

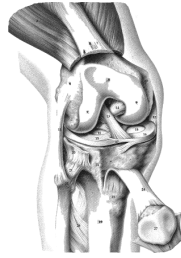
Range Animal Hospital

**E6116 US Highway 2
Ironwood, MI 49938**

1-906-932-3531

1-888-380-6319

FAX 1-906-932-6017



Stifle Arthrodesis

- This is seldom used but a good procedure for advanced stifle arthritis not amenable to other medical or surgical treatment.
- It should be considered a salvage procedure, but is a good procedure to eliminate the chronic pain of advanced degenerative stifle disease.
- The procedure entails removing the articular cartilage of the femur and tibia and fixing the joint in a 135° angle with bone plate fixation.
- We prefer to do these procedures on Monday or Tuesday, with the dog returning home in one or two days.
- Cost is approximately \$1900 to \$2400 [January, 2011]. This includes everything with the exception of any needed pre-op blood work or radiographs. Feel free to send clients with appropriate lab work and films. We will be sure the radiographs are returned.