

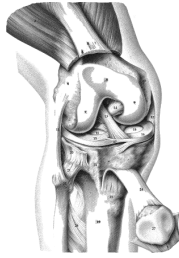
Range Animal Hospital

**E6116 US Highway 2
Ironwood, MI 49938**

1-906-932-3531

1-888-380-6319

FAX 1-906-932-6017



Luxating Patella Repair

-
- This is a common cause of lameness in small breed dogs. It is most often diagnosed without radiographs.
 - The repair is often accomplished with one or more surgical modalities:
 - V-Plasty of the trochlear groove or simply deepening the groove with a rasp or burr.
 - Transposition of the tibial tuberosity
 - Imbrication of the joint capsule and lateral patellar tendon.
 - Placement of a lateral de-rotational suture.
 - The success of this procedure is excellent.
 - A morning appointment is scheduled with Dr. Martinson who will meet with the client, examine the dog both awake and under anesthesia, and then take immediately to surgery. While the animal is prepped, Dr. Martinson will explain the procedure in depth, the aftercare, and answer any questions.
 - We prefer to do these procedures on Monday, Tuesday and Thursday, with the dog returning home the next day.
 - Cost is approximately \$1100 to \$1300 [January, 2011]. This does not include any pre-op blood work or radiographs. Feel free to send appropriate lab work and films. We will be sure that radiographs are returned.