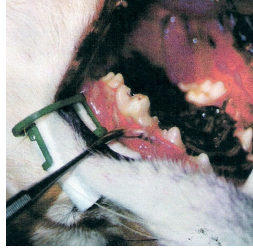


Range Animal Hospital
E6116 US Highway 2
Ironwood, MI 49938
1-906-932-3531
1-888-380-6319
FAX 1-906-932-6017



Surgical Tooth Extractions

- An extraction procedure that is very much under performed. The elevation of a gum flap and removal of the labial alveolar socket along with sectioning of the tooth to its individual roots makes the extraction of the canines, upper P₄'s and the lower M₁ much simpler, less time consuming, and less traumatic.
- The technical details for surgical extractions are not beyond most practices, but attention to detail, and the availability of a high-speed dental engine are a must.
- This is also a very useful technique where the crown is fractured, leaving little grip for the extraction forceps.
- A morning appointment is scheduled with Dr. Martinson, who will meet with the client, examine the dog awake and under anesthesia, examine possible radiographs, and take it immediately to surgery if indicated. Dr. Martinson will take appropriate time to explain the procedure, the aftercare, and answer any questions that your clients may have.
- We prefer to do these procedures on Monday, Tuesday and Thursday, with the dog returning home the same day, generally between 3:00 and 5:00 PM.
- Cost is approximately \$200 to \$275 for single and multiple root teeth respectively. [January 2011]. This includes anesthesia, x-rays, but not any needed pre-op blood work. Feel free to send the clients with appropriate lab work and films. We will be sure the radiographs are returned.